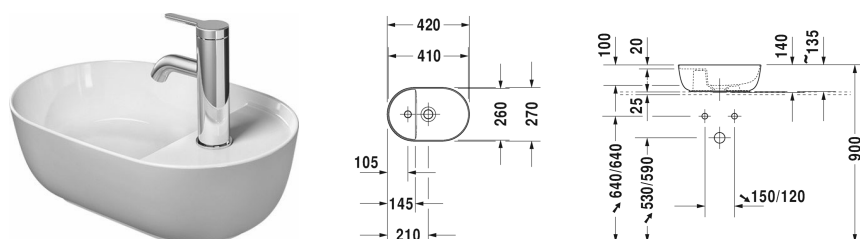


Luv Washbowl # 038142..00 / 038142..00 / 038142..00

| < 420 mm > |



Washbowl	Dimension	Weight	Order number
ground, without overflow, ceramic covered slotted waste included, fixings included, reversible, 420 mm			
<b>Colors</b>			
00 White Alpin 23 White/Grey Satin matt 26 White/White Satin Matt			
<b>Variant</b>			
● inside colour White, outside colour White, with tap platform	420 x 270 mm	5.400 kilogram	038142..00
● inside colour White, outside colour Grey Satin Matt, with tap platform	420 x 270 mm	5.400 kilogram	038142..00
● inside colour White, outside colour White Satin Matt, with tap platform	420 x 270 mm	5.400 kilogram	038142..00
<b>Infobox</b>			
Made from DuraCeram, * When using this siphon please observe outlet height from upper surface of finished floor to centre of outlet in accordance with the technical specification sheet			
Sanitary ceramics with the special WonderGliss surface finish will remain clean and attractive-looking for a long time to come. When ordering WonderGliss please add a "1" as eleventh digit to the model number.			
<b>Accessory</b>			
Design Siphon		1.500 kilogram	005036
<b>Suitable products</b>			
Vanity unit wall-mounted 1 pull-out compartment, countertop including one cut-out, for 1 above counter basin central, 800 x 550 mm	800 x 550 mm		KT6694
Vanity unit wall-mounted 1 pull-out compartment, countertop including one cut-out, for 1 above counter basin central, 1000 x 550 mm	1000 x 550 mm		KT6695
Vanity unit wall-mounted 1 pull-out compartment, countertop including one cut-out, for 1 above counter basin central, 1200 x 550 mm	1200 x 550 mm		KT6696

**Luv Washbowl # 038142..00 / 038142..00 / 038142..00**

| < 420 mm > |

Vanity unit wall-mounted 2 pull-out compartments, 1 countertop with one cut-out or two cut-outs, for 1 or 2 above counter basins, 1400 x 550 mm	1400 x 550 mm	KT6697 B/L/R
Vanity unit wall-mounted 2 drawers, upper drawer including cut-out for siphon and siphon cover, countertop including one cut-out, for 1 above counter basin central, 800 x 550 mm	800 x 550 mm	KT6654
Vanity unit wall-mounted 2 drawers, upper drawer including cut-out for siphon and siphon cover, countertop including one cut-out, for 1 above counter basin central, 1000 x 550 mm	1000 x 550 mm	KT6655
Vanity unit wall-mounted 2 drawers, upper drawer including cut-out for siphon and siphon cover, countertop including one cut-out, for 1 above counter basin central, 1200 x 550 mm	1200 x 550 mm	KT6656
Vanity unit wall-mounted 4 drawers, drawer beneath basin including cut-out for siphon and siphon cover, 1 countertop with one cut-out or two cut-outs, for 1 or 2 above counter basins, 1400 x 550 mm	1400 x 550 mm	KT6657 B/L/R
Vanity unit wall-mounted 1 pull-out compartment, countertop including one cut-out, 1000 x 550 mm	1000 x 550 mm	DS6784 L/R
Vanity unit wall-mounted 2 pull-out compartments, 1 console with one cut-out, 1400 x 550 mm	1400 x 550 mm	DS6785 L/R
Vanity unit for console compact 1 pull-out compartment, 600 x 478 mm	600 x 478 mm	DS5300
Vanity unit for console compact 1 pull-out compartment, 700 x 478 mm	700 x 478 mm	DS5301
Vanity unit for console compact 1 pull-out compartment, 800 x 478 mm	800 x 478 mm	DS5302
Vanity unit for console compact 1 pull-out compartment, 900 x 478 mm	900 x 478 mm	DS5303
Vanity unit for console compact 1 pull-out compartment, 1000 x 478 mm	1000 x 478 mm	DS5304
Vanity unit for console compact 2 drawers, upper drawer including cut-out for siphon and siphon cover, 600 x 478 mm	600 x 478 mm	DS5305
Vanity unit for console compact 2 drawers, upper drawer including cut-out for siphon and siphon cover, 700 x 478 mm	700 x 478 mm	DS5306
Vanity unit for console compact 2 drawers, upper drawer including cut-out for siphon and siphon cover, 800 x 478 mm	800 x 478 mm	DS5307
Vanity unit for console compact 2 drawers, upper drawer including cut-out for siphon and siphon cover, 900 x 478 mm	900 x 478 mm	DS5308
Vanity unit for console compact 2 drawers, upper drawer including cut-out for siphon and siphon cover, 1000 x 478 mm	1000 x 478 mm	DS5309
Vanity unit for console 1 pull-out compartment, 600 x 548 mm	600 x 548 mm	DS5310
Vanity unit for console 1 pull-out compartment, 700 x 548 mm	700 x 548 mm	DS5311
Vanity unit for console 1 pull-out compartment, 800 x 548 mm	800 x 548 mm	DS5312
Vanity unit for console 1 pull-out compartment, 900 x 548 mm	900 x 548 mm	DS5313
Vanity unit for console 1 pull-out compartment, 1000 x 548 mm	1000 x 548 mm	DS5314
Vanity unit for console 2 drawers, upper drawer including cut-out for siphon and siphon cover, 600 x 548 mm	600 x 548 mm	DS5315

**Luv Washbowl # 038142..00 / 038142..00 / 038142..00**

|&lt; 420 mm &gt;|

Vanity unit for console 2 drawers, upper drawer including cut-out for siphon and siphon cover, 700 x 548 mm	700 x 548 mm	DS5316
Vanity unit for console 2 drawers, upper drawer including cut-out for siphon and siphon cover, 800 x 548 mm	800 x 548 mm	DS5317
Vanity unit for console 2 drawers, upper drawer including cut-out for siphon and siphon cover, 900 x 548 mm	900 x 548 mm	DS5318
Vanity unit for console 2 drawers, upper drawer including cut-out for siphon and siphon cover, 1000 x 548 mm	1000 x 548 mm	DS5319
Vanity unit for console compact 1 pull-out compartment, 620 x 477 mm	620 x 477 mm	LC5800
Vanity unit for console compact 1 pull-out compartment, 720 x 477 mm	720 x 477 mm	LC5801
Vanity unit for console compact 1 pull-out compartment, 820 x 477 mm	820 x 477 mm	LC5802
Vanity unit for console compact 1 pull-out compartment, 920 x 477 mm	920 x 477 mm	LC5803
Vanity unit for console compact 1 pull-out compartment, 1020 x 477 mm	1020 x 477 mm	LC5804
Vanity unit for console compact 2 drawers, upper drawer including cut-out for siphon and siphon cover, 620 x 477 mm	620 x 477 mm	LC5805
Vanity unit for console compact 2 drawers, upper drawer including cut-out for siphon and siphon cover, 720 x 477 mm	720 x 477 mm	LC5806
Vanity unit for console compact 2 drawers, upper drawer including cut-out for siphon and siphon cover, 820 x 477 mm	820 x 477 mm	LC5807
Vanity unit for console compact 2 drawers, upper drawer including cut-out for siphon and siphon cover, 920 x 477 mm	920 x 477 mm	LC5808
Vanity unit for console compact 2 drawers, upper drawer including cut-out for siphon and siphon cover, 1020 x 477 mm	1020 x 477 mm	LC5809
Vanity unit for console 1 pull-out compartment, 620 x 547 mm	620 x 547 mm	LC5810
Vanity unit for console 1 pull-out compartment, 720 x 547 mm	720 x 547 mm	LC5811
Vanity unit for console 1 pull-out compartment, 820 x 547 mm	820 x 547 mm	LC5812
Vanity unit for console 1 pull-out compartment, 920 x 547 mm	920 x 547 mm	LC5813
Vanity unit for console 1 pull-out compartment, 1020 x 547 mm	1020 x 547 mm	LC5814
Vanity unit for console 2 drawers, upper drawer including cut-out for siphon and siphon cover, 620 x 547 mm	620 x 547 mm	LC5815
Vanity unit for console 2 drawers, upper drawer including cut-out for siphon and siphon cover, 720 x 547 mm	720 x 547 mm	LC5816
Vanity unit for console 2 drawers, upper drawer including cut-out for siphon and siphon cover, 820 x 547 mm	820 x 547 mm	LC5817
Vanity unit for console 2 drawers, upper drawer including cut-out for siphon and siphon cover, 920 x 547 mm	920 x 547 mm	LC5818
Vanity unit for console 2 drawers, upper drawer including cut-out for siphon and siphon cover, 1020 x 547 mm	1020 x 547 mm	LC5819
Vanity unit for console floor-standing 2 pull-out compartments, 1733 x 570 mm	1733 x 570 mm	LU9562 B

Luv Washbowl # 038142..00 / 038142..00 / 038142..00

|< 420 mm >|

Vanit unit for console floor-standing 2 pull-out compartments, 1733 x 570 mm	1733 x 570 mm	LU9563 L/R
Vanit unit for console floor-standing 1 pull-out compartment, 638 x 450 mm	638 x 450 mm	LU9560
Vanit unit for console floor-standing 1 drawer, 1 pull-out compartment, upper drawer including cut-out for siphon and siphon cover, 638 x 450 mm	638 x 450 mm	LU9565
Vanit unit for console floor-standing 1 drawer, 1 pull-out compartment, upper drawer including cut-out for siphon and siphon cover, 1338 x 570 mm	1338 x 570 mm	LU9566
Vanit unit for console floor-standing 2 drawers, 2 pull-out compartments, upper drawer including cut-out for siphon and siphon cover, 1733 x 570 mm	1733 x 570 mm	LU9567 B
Vanit unit for console floor-standing 2 drawers, 2 pull-out compartments, 1733 x 570 mm	1733 x 570 mm	LU9568 L/R
Vanit unit for console wall-mounted 1 pull-out compartment, 800 x 548 mm	800 x 548 mm	XS4900
Vanit unit for console wall-mounted 1 pull-out compartment, 1000 x 548 mm	1000 x 548 mm	XS4901
Vanit unit for console wall-mounted 1 pull-out compartment, 1200 x 548 mm	1200 x 548 mm	XS4902
Vanit unit for console wall-mounted 2 drawers, upper drawer including cut-out for siphon and siphon cover, 800 x 548 mm	800 x 548 mm	XS4910
Vanit unit for console wall-mounted 2 drawers, upper drawer including cut-out for siphon and siphon cover, 1000 x 548 mm	1000 x 548 mm	XS4911
Vanit unit for console wall-mounted 2 drawers, upper drawer including cut-out for siphon and siphon cover, 1200 x 548 mm	1200 x 548 mm	XS4912
Vanit unit for console floor-standing 2 pull-out compartments, integrated base frame legs with height adjustment, 800 x 548 mm	800 x 548 mm	XS4920
Vanit unit for console floor-standing 2 pull-out compartments, integrated base frame legs with height adjustment, 1000 x 548 mm	1000 x 548 mm	XS4921
Vanit unit for console floor-standing 2 pull-out compartments, integrated base frame legs with height adjustment, 1200 x 548 mm	1200 x 548 mm	XS4922
Vanit unit for console wall-mounted 2 pull-out compartments, 1400 x 548 mm	1400 x 548 mm	XS4903 L/R
Vanit unit for console wall-mounted 2 pull-out compartments, 1600 x 548 mm	1600 x 548 mm	XS4904 R/L
Vanit unit for console wall-mounted 4 drawers, 1400 x 548 mm	1400 x 548 mm	XS4913 L/R
Vanit unit for console wall-mounted 4 drawers, 1600 x 548 mm	1600 x 548 mm	XS4914 L/R
Vanit unit for console floor-standing 4 pull-out compartments, integrated base frame legs with height adjustment, 1400 x 548 mm	1400 x 548 mm	XS4923 R/L
Vanit unit for console floor-standing 4 pull-out compartments, integrated base frame legs with height adjustment, 1600 x 548 mm	1600 x 548 mm	XS4924 L/R

Luv Washbowl # 038142..00 / 038142..00 / 038142..00

| < 420 mm > |

Vanit unit for console wall-mounted 2 pull-out compartments, 1400 x 548 mm	1400 x 548 mm	XS4906 B
Vanit unit for console wall-mounted 2 pull-out compartments, 1600 x 548 mm	1600 x 548 mm	XS4907 B
Vanit unit for console wall-mounted 4 drawers, upper drawer including cut-out for siphon and siphon cover, 1400 x 548 mm	1400 x 548 mm	XS4916 B
Vanit unit for console wall-mounted 4 drawers, upper drawer including cut-out for siphon and siphon cover, 1600 x 548 mm	1600 x 548 mm	XS4917 B
Vanit unit for console floor-standing 4 pull-out compartments, integrated base frame legs with height adjustment, 1400 x 548 mm	1400 x 548 mm	XS4926 B
Vanit unit for console floor-standing 4 pull-out compartments, integrated base frame legs with height adjustment, 1600 x 548 mm	1600 x 548 mm	XS4927 B
Vanit unit for console floor-standing 1 pull-out compartment, 938 x 570 mm	938 x 570 mm	LU9564
Vanit unit for console floor-standing 1 drawer, 1 pull-out compartment, upper drawer including cut-out for siphon and siphon cover, 938 x 570 mm	938 x 570 mm	LU9569
Console for above counter basin and countertop basin 1 console with one cut-out, price per section of 100 mm, basic price till 800 mm, 45 mm thickness, 550 mm	550 mm	DS102C
Console for above counter basin and countertop basin 1 console with two cut-outs, price per section of 100 mm, basic price till 800 mm, 45 mm thickness, 550 mm	550 mm	DS103C
Console for above counter basin and countertop basin 1 console with one cut-out, price per section of 100 mm, basic price till 800 mm, 30 mm thickness, 550 mm	550 mm	DS106C
Console for above counter basin and countertop basin 1 console with two cut-outs, price per section of 100 mm, basic price till 800 mm, 30 mm thickness, 550 mm	550 mm	DS107C
Console for above counter basin and countertop basin 1 console with one cut-out, price per section of 100 mm, basic price till 800 mm, 45 mm thickness, 550 mm	550 mm	LC102C
Console for above counter basin and countertop basin 1 console with two cut-outs, price per section of 100 mm, basic price till 800 mm, 45 mm thickness, 550 mm	550 mm	LC103C
Console for above counter basin and countertop basin 1 console with one cut-out, price per section of 100 mm, basic price till 800 mm, 30 mm thickness, 550 mm	550 mm	LC106C
Console for above counter basin and countertop basin 1 console with two cut-outs, price per section of 100 mm, basic price till 800 mm, 30 mm thickness, 550 mm	550 mm	LC107C
Console for above counter basin and countertop basin compact 1 console with one cut-out, price per section of 100 mm, basic price till 800 mm, 45 mm thickness, 480 mm	480 mm	DS100C
Console for above counter basin and countertop basin compact 1 console with two cut-outs, price per section of 100 mm, basic price till 800 mm, 45 mm thickness, 480 mm	480 mm	DS101C

Luv Washbowl # 038142..00 / 038142..00 / 038142..00

| < 420 mm > |

Console for above counter basin and countertop basin compact 1 console with one cut-out, price per section of 100 mm, basic price till 800 mm, 30 mm thickness, 480 mm	480 mm	DS104C
Console for above counter basin and countertop basin compact 1 console with two cut-outs, price per section of 100 mm, basic price till 800 mm, 30 mm thickness, 480 mm	480 mm	DS105C
Console for above counter basin and countertop basin compact 1 console with one cut-out, price per section of 100 mm, basic price till 800 mm, 45 mm thickness, 480 mm	480 mm	LC100C
Console for above counter basin and countertop basin compact 1 console with two cut-outs, price per section of 100 mm, basic price till 800 mm, 45 mm thickness, 480 mm	480 mm	LC101C
Console for above counter basin and countertop basin compact 1 console with one cut-out, price per section of 100 mm, basic price till 800 mm, 30 mm thickness, 480 mm	480 mm	LC104C
Console for above counter basin and countertop basin compact 1 console with two cut-outs, price per section of 100 mm, basic price till 800 mm, 30 mm thickness, 480 mm	480 mm	LC105C
Vanity unit wall-mounted 1 pull-out compartment, 1 console with one cut-out, 800 x 550 mm	800 x 550 mm	WT4975
Vanity unit wall-mounted 1 pull-out compartment, 1 console with one cut-out, 1000 x 550 mm	1000 x 550 mm	WT4976
Vanity unit wall-mounted 1 pull-out compartment, 1 console with one cut-out, 1300 x 550 mm	1300 x 550 mm	WT4977 L/R/M
Vanity unit wall-mounted 1 pull-out compartment, 1 console with two cut-outs, 1300 x 550 mm	1300 x 550 mm	WT4978 B
Vanity unit wall-mounted 2 drawers, upper drawer including cut-out for siphon and siphon cover, 1 console with one cut-out, 800 x 550 mm	800 x 550 mm	WT4985
Vanity unit wall-mounted 2 drawers, upper drawer including cut-out for siphon and siphon cover, 1 console with one cut-out, 1000 x 550 mm	1000 x 550 mm	WT4986
Vanity unit wall-mounted 2 drawers, upper drawer including cut-out for siphon and siphon cover, 1 console with one cut-out, 1300 x 550 mm	1300 x 550 mm	WT4987 L/R/M
Vanity unit wall-mounted 2 drawers, upper drawer including cut-out for siphon and siphon cover, 1 console with two cut-outs, 1300 x 550 mm	1300 x 550 mm	WT4988 B
Vanity unit wall-mounted 1 pull-out compartment, 1 console with one cut-out, 800 x 550 mm	800 x 550 mm	WT4980
Vanity unit wall-mounted 1 pull-out compartment, 1 console with one cut-out, 1000 x 550 mm	1000 x 550 mm	WT4981
Vanity unit wall-mounted 1 pull-out compartment, 1 console with one cut-out, 1300 x 550 mm	1300 x 550 mm	WT4982 L/R/M
Vanity unit wall-mounted 1 pull-out compartment, 1 console with two cut-outs, 1300 x 550 mm	1300 x 550 mm	WT4983 B
Vanity unit wall-mounted 2 drawers, upper drawer including cut-out for siphon and siphon cover, 1 console with one cut-out, 800 x 550 mm	800 x 550 mm	WT4990

Luv Washbowl # 038142..00 / 038142..00 / 038142..00

|< 420 mm >|

Vanity unit wall-mounted 2 drawers, upper drawer including cut-out for siphon and siphon cover, 1 console with one cut-out, 1300 x 550 mm	1300 x 550 mm	WT4992 L/R/M
Vanity unit wall-mounted 2 drawers, upper drawer including cut-out for siphon and siphon cover, 1 console with two cut-outs, 1300 x 550 mm	1300 x 550 mm	WT4993 B
Vanity unit wall-mounted 1 pull-out compartment, 1 console with one cut-out, 800 x 550 mm	800 x 550 mm	DE4947
Vanity unit wall-mounted 1 pull-out compartment, 1 console with one cut-out, 1000 x 550 mm	1000 x 550 mm	DE4948
Vanity unit wall-mounted 1 pull-out compartment, 1 console with one cut-out, 1200 x 550 mm	1200 x 550 mm	DE4949
Vanity unit wall-mounted 2 pull-out compartments, 1 opened shelf incl. wooden floor, 1 countertop with one cut-out or two cut-outs, 1400 x 550 mm	1400 x 550 mm	DE4950 B/L/R
Vanity unit wall-mounted 1 drawer, 1 pull-out compartment, upper drawer including cut-out for siphon and siphon cover, 1 console with one cut-out, 800 x 550 mm	800 x 550 mm	DE4967
Vanity unit wall-mounted 1 drawer, 1 pull-out compartment, upper drawer including cut-out for siphon and siphon cover, 1 console with one cut-out, 1000 x 550 mm	1000 x 550 mm	DE4968
Vanity unit wall-mounted 1 drawer, 1 pull-out compartment, upper drawer including cut-out for siphon and siphon cover, 1 console with one cut-out, 1200 x 550 mm	1200 x 550 mm	DE4969
Vanity unit wall-mounted 2 drawers, 2 pull-out compartments, drawer beneath basin including cut-out for siphon and siphon cover, 1 opened shelf incl. wooden floor, 1 countertop with one cut-out or two cut-outs, 1400 x 550 mm	1400 x 550 mm	DE4970 B/L/R
Vanity unit wall-mounted compact 1 open compartment on the right side, 1 console with one cut-out, 800 x 480 mm	800 x 480 mm	DE4918
Vanity unit wall-mounted 1 open compartment on the right side, 1 console with one cut-out, 800 x 550 mm	800 x 550 mm	DE4928
Vanity unit wall-mounted 1 open compartment on the right side, 1 console with one cut-out, 1000 x 550 mm	1000 x 550 mm	DE4929
Vanity unit wall-mounted compact 1 open compartment on the right side, 1 console with one cut-out, 1000 x 480 mm	1000 x 480 mm	DE4919
Vanity unit wall-mounted compact 1 open compartment on the left side, 1 console with one cut-out, 800 x 480 mm	800 x 480 mm	DE4938
Vanity unit wall-mounted compact 1 open compartment on the left side, 1 console with one cut-out, 1000 x 480 mm	1000 x 480 mm	DE4939
Vanity unit wall-mounted 1 open compartment on the left side, 1 console with one cut-out, 800 x 550 mm	800 x 550 mm	DE4958
Vanity unit wall-mounted 1 open compartment on the left side, 1 console with one cut-out, 1000 x 550 mm	1000 x 550 mm	DE4959
Vanity unit wall-mounted 2 drawers, upper drawer including cut-out for siphon and siphon cover, 1 console with one cut-out, 800 x 550 mm	800 x 550 mm	XV4770
Vanity unit wall-mounted 2 drawers, upper drawer including cut-out for siphon and siphon cover, 1 console with one cut-out, 1000 x 550 mm	1000 x 550 mm	XV4771

Luv Washbowl # 038142..00 / 038142..00 / 038142..00

| < 420 mm > |

Vanity unit wall-mounted 2 drawers, upper drawer including cut-out for siphon and siphon cover, 1 console with one cut-out, 1200 x 550 mm	1200 x 550 mm	XV4772
Vanity unit wall-mounted 4 drawers, upper drawer including cut-out for siphon and siphon cover, 1 console with one cut-out, 1400 x 550 mm	1400 x 550 mm	XV4773 L/R
Vanity unit wall-mounted 4 drawers, upper drawer including cut-out for siphon and siphon cover, 1 console with one cut-out, 1600 x 550 mm	1600 x 550 mm	XV4775 L/R
Vanity unit wall-mounted 4 drawers, upper drawer including cut-out for siphon and siphon cover, 1 console with two cut-outs, 1400 x 550 mm	1400 x 550 mm	XV4774 B
Vanity unit wall-mounted 4 drawers, upper drawer including cut-out for siphon and siphon cover, 1 console with two cut-outs, 1600 x 550 mm	1600 x 550 mm	XV4776 B
Vanity unit wall-mounted 1 pull-out compartment, 1 console with one cut-out, 800 x 550 mm	800 x 550 mm	K24885
Vanity unit wall-mounted 1 pull-out compartment, 1 console with one cut-out, 1000 x 550 mm	1000 x 550 mm	K24886
Vanity unit wall-mounted 1 pull-out compartment, 1 console with one cut-out, 1200 x 550 mm	1200 x 550 mm	K24887
Vanity unit wall-mounted 2 pull-out compartments, 1 countertop with one cut-out or two cut-outs, 1400 x 550 mm	1400 x 550 mm	K24888 B/L/R
Vanity unit wall-mounted 2 pull-out compartments, 1 countertop with one cut-out or two cut-outs, 1600 x 550 mm	1600 x 550 mm	K24889 L/B/R
Vanity unit wall-mounted 2 drawers, upper drawer including cut-out for siphon and siphon cover, 1 console with one cut-out, 800 x 550 mm	800 x 550 mm	K24895
Vanity unit wall-mounted 2 drawers, upper drawer including cut-out for siphon and siphon cover, 1 console with one cut-out, 1000 x 550 mm	1000 x 550 mm	K24896
Vanity unit wall-mounted 2 drawers, upper drawer including cut-out for siphon and siphon cover, 1 console with one cut-out, 1200 x 550 mm	1200 x 550 mm	K24897
Vanity unit wall-mounted 4 drawers, 1 countertop with one cut-out or two cut-outs, 1400 x 550 mm	1400 x 550 mm	K24898 B/L/R
Vanity unit wall-mounted 4 drawers, 1 countertop with one cut-out or two cut-outs, 1600 x 550 mm	1600 x 550 mm	K24899 B/L/R
Vanity unit wall-mounted 2 pull-out compartments, 1 console with one cut-out, 1600 x 550 mm	1600 x 550 mm	WT4864 L/R
Vanity unit wall-mounted 2 pull-out compartments, 1 console with two cut-outs, 1600 x 550 mm	1600 x 550 mm	WT4865 B
Vanity unit wall-mounted 2 pull-out compartments, 1 console with one cut-out, 1600 x 550 mm	1600 x 550 mm	WT4890 L/R
Vanity unit wall-mounted 2 pull-out compartments, 1 console with two cut-outs, 1600 x 550 mm	1600 x 550 mm	WT4891 B
Vanity unit wall-mounted 4 drawers, 1 console with one cut-out, 1600 x 550 mm	1600 x 550 mm	WT4867 L/R



Luv Washbowl # 038142..00 / 038142..00 / 038142..00

|< 420 mm >|

Vanity unit wall-mounted 1 console with two cut-outs, upper drawer including cut-out for siphon and siphon cover, 4 drawers, 1600 x 550 mm	1600 x 550 mm	WT4868 B
Vanity unit wall-mounted 4 drawers, 1 console with one cut-out, 1600 x 550 mm	1600 x 550 mm	WT4995 L/R
Vanity unit wall-mounted 1 console with two cut-outs, upper drawer including cut-out for siphon and siphon cover, 4 drawers, 1600 x 550 mm	1600 x 550 mm	WT4996 B
Vanity unit wall-mounted 1 drawer, 1 pull-out compartment, upper drawer including cut-out for siphon and siphon cover, 1 console with one cut-out, 820 x 550 mm	820 x 550 mm	LC4880
Vanity unit wall-mounted 1 drawer, 1 pull-out compartment, upper drawer including cut-out for siphon and siphon cover, 1 console with one cut-out, 1020 x 550 mm	1020 x 550 mm	LC4881
Vanity unit wall-mounted 1 drawer, 1 pull-out compartment, upper drawer including cut-out for siphon and siphon cover, 1 console with one cut-out, 1220 x 550 mm	1220 x 550 mm	LC4882
Vanity unit wall-mounted 2 drawers, 2 pull-out compartments, 1 countertop with one cut-out left or right, 1420 x 550 mm	1420 x 550 mm	LC4870 L/R
Vanity unit wall-mounted 2 drawers, 2 pull-out compartments, 1 countertop with one cut-out left or right, 1620 x 550 mm	1620 x 550 mm	LC4871 L/R
Vanity unit wall-mounted 2 drawers, 2 pull-out compartments, upper drawer including cut-out for siphon and siphon cover, 1 console with two cut-outs, 1420 x 550 mm	1420 x 550 mm	LC4872 B
Vanity unit wall-mounted 2 drawers, 2 pull-out compartments, upper drawer including cut-out for siphon and siphon cover, 1 console with two cut-outs, 1620 x 550 mm	1620 x 550 mm	LC4873 B
Vanity unit wall-mounted 2 drawers, 2 pull-out compartments, 1 console with one cut-out, 1220 x 550 mm	1220 x 550 mm	LC4874
Vanity unit wall-mounted 2 drawers, 2 pull-out compartments, 1 console with one cut-out, 1420 x 550 mm	1420 x 550 mm	LC4875
Vanity unit wall-mounted 2 drawers, 2 pull-out compartments, 1 console with one cut-out, 1220 x 550 mm	1220 x 550 mm	LC4876
Vanity unit wall-mounted 2 drawers, 2 pull-out compartments, 1 console with one cut-out, 1420 x 550 mm	1420 x 550 mm	LC4877
<b>Recommended faucets</b>		
Single lever basin mixer S ceramic cartridge, Projection 91 mm, flexible connection hoses 3/8", aerator adjustable, normal spray, recommended operating pressure 3 - 5 bar, with pop-up waste set,		C11010001
Single lever basin mixer M ceramic cartridge, Projection 113 mm, flexible connection hoses 3/8", aerator adjustable, normal spray, recommended operating pressure 3 - 5 bar, with pop-up waste set,		C11020001
Single lever basin mixer S ceramic cartridge, Projection 91 mm, flexible connection hoses 3/8", aerator adjustable, normal spray, recommended operating pressure 3 - 5 bar, without pop-up waste set,		C11010002

Luv Washbowl # 038142..00 / 038142..00 / 038142..00

|< 420 mm >|

Single lever basin mixer M ceramic cartridge, Projection 113 mm, flexible connection hoses 3/8", aerator adjustable, normal spray, recommended operating pressure 3 - 5 bar, without pop-up waste set,

C11020002

*All drawings contain the necessary measurements which are subject to standard tolerances. They are stated in mm and are non-binding. Exact measurements, in particular for customised installation scenarios, can only be taken from the finished piece.*